

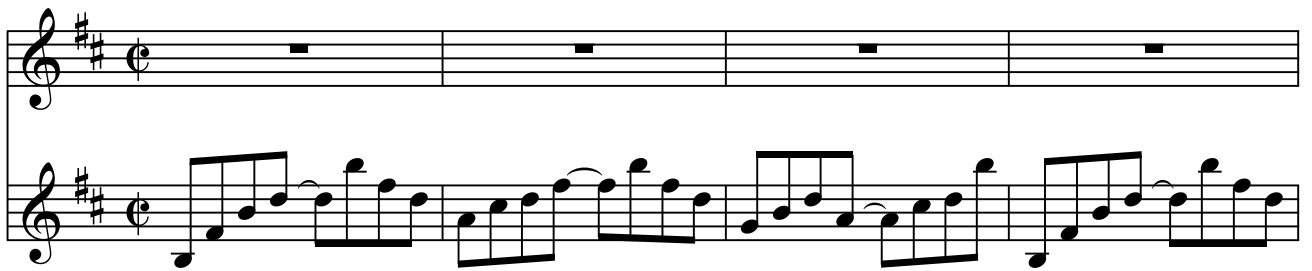
# Show me a way

$\text{♩} = 60$

Miguel Robaina

**Depressing**

Voice



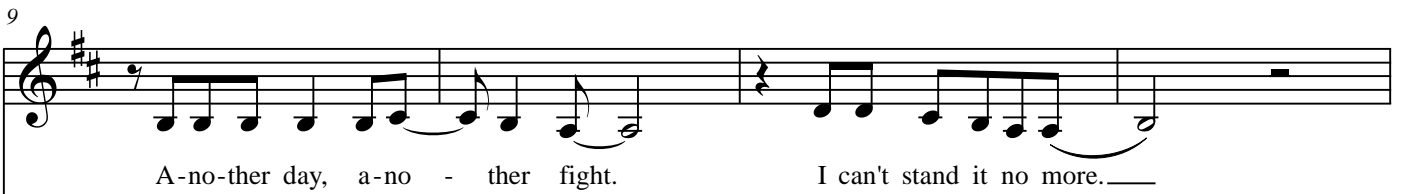
Piano

*con Ped.*

5



9



A-no-ther day, a-no - ther fight. I can't stand it no more.\_\_\_\_

9



13

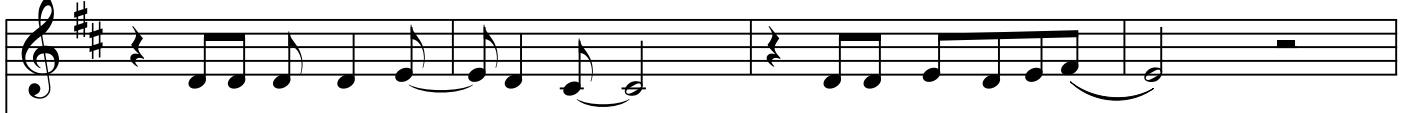


What is wrong and what \_\_\_\_ is right? I'm feel-ing so in-se-cure.\_\_\_\_

13



27



Can I trust what my \_\_\_eyes see?\_\_\_ Is my mind full of lies?\_\_\_

17



21



Is this how it's sup-posed \_\_\_ to be?\_\_\_ I need to break off these ties. \_\_\_

21



25

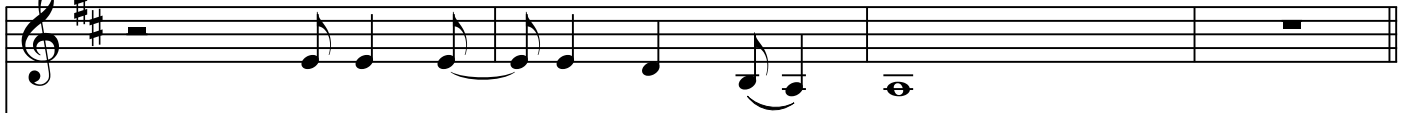


How can I change \_\_\_ these re - flec-tions that are haunt - ing me?\_\_\_

25

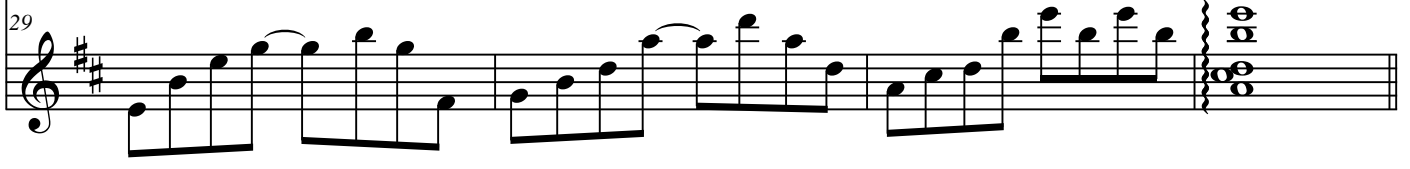


29



How do I \_\_\_ know who to \_\_\_ be?

29



*SOLO ad lib.*

33



37

Musical staff for measures 37-40, treble clef, key signature of two sharps (F# and C#).

41

Musical staff for measures 41-44, treble clef, key signature of two sharps (F# and C#).

Mir-ror, mir-ror on \_\_\_\_\_ the wall. \_\_\_\_\_ Not a sight of sal-va - tion.

41

Musical staff for measures 41-44, treble clef, key signature of two sharps (F# and C#).

45

Musical staff for measures 45-48, treble clef, key signature of two sharps (F# and C#).

I'm try-ing so hard not \_\_\_\_\_ to fall, in-to my own dam-na - tion.

45

Musical staff for measures 45-48, treble clef, key signature of two sharps (F# and C#).

49

Musical staff for measures 49-52, treble clef, key signature of two sharps (F# and C#).

How can I face \_\_\_\_\_ these con - fu - sing words I hear \_\_\_\_\_ a-gain?

49

Musical staff for measures 49-52, treble clef, key signature of two sharps (F# and C#).

53

Musical staff for measures 53-56, treble clef, key signature of two sharps (F# and C#).

some-one help \_\_\_\_\_ me through this pain. \_\_\_\_\_

53

Musical staff for measures 53-56, treble clef, key signature of two sharps (F# and C#).

4

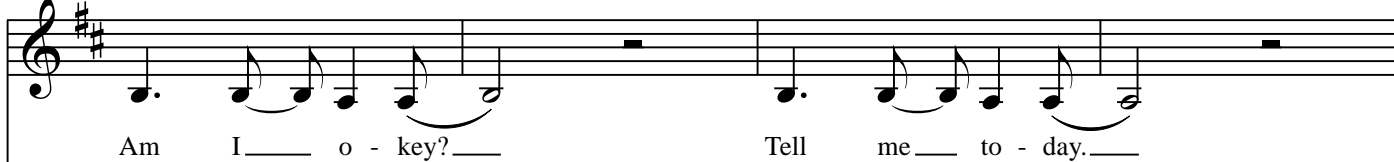
57



Show me a way That's how I pray.



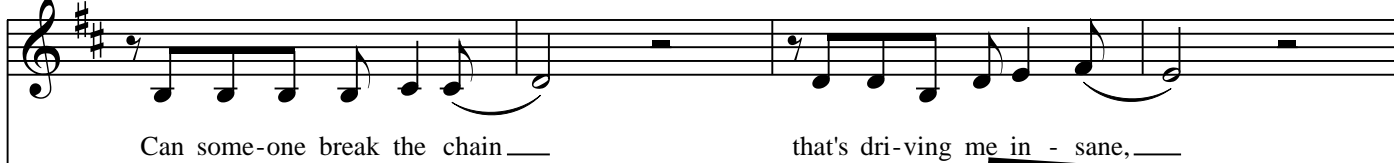
61



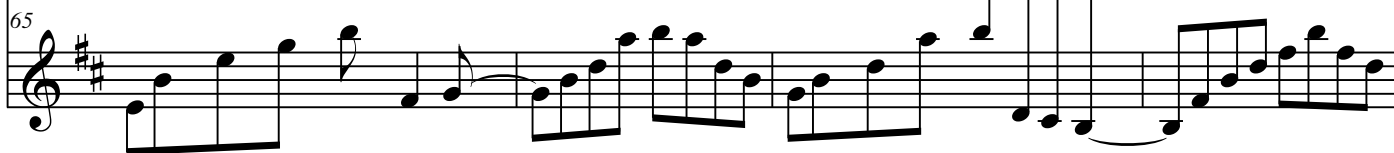
Am I o - key? Tell me to - day.



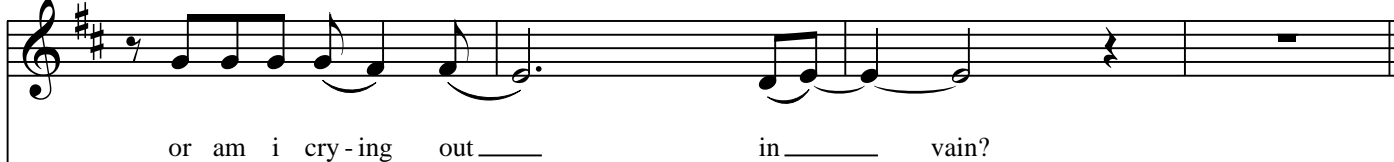
65



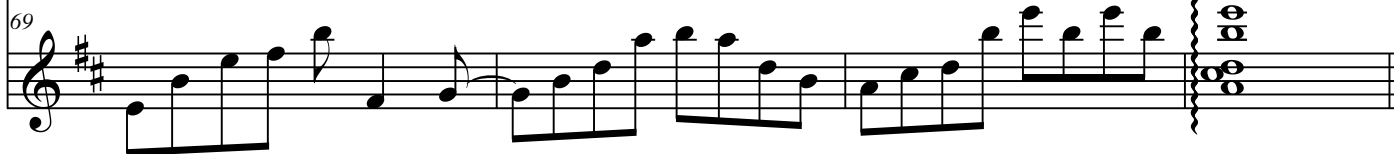
Can some-one break the chain that's dri-ving me in - sane,



69



or am i cry-ing out in vain?



*SOLO ad lib.*

73



77

81

85

89

Show me — a way — That's how — I pray. —

89

93

Am I — o - key? — Tell me — to - day. —

93

97

Show me a way — That's how — I pray. —

97

6  
101

Am I o - key? \_\_\_ Tell me \_\_\_ to - day. \_\_\_ Can some - one break the chain

106

\_\_\_ that's dri - ving me in - sane, \_\_\_ or am i cry - ing out

110

\_\_\_ in \_\_\_ vain? Show me \_\_\_ a way \_\_\_ That's how \_\_\_ I pray.

115

\_\_\_ Am I \_\_\_ o - key? \_\_\_ Tell me \_\_\_ to - day